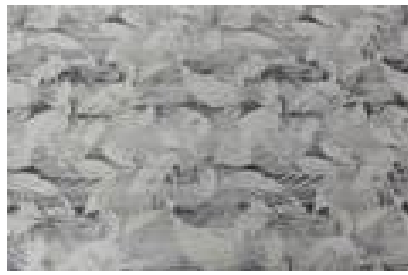
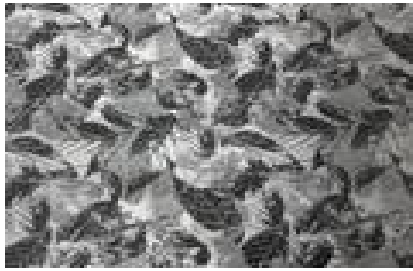


KA – Kat II. PES 100%



KB – Kat II. BA 30% PES 70%



KD – Kat II. BA 30% PES 70%



KF – Kat II. BA 30% PES 70%



KK Kat II. BA 15% PES 45% Acryl 40%



KL – Kat II. BA 15% PES 45% ACRYL 40%



KM – Kat II. BA 15% PES 45% Acryl 40%



KN – Kat II. PES 40% Acryl 60%



KO – Kat II. PES 40% Acryl 60%



KP – Kat II. PES 40% Acryl 60%



KR – Kat II. BA 15% PES 45% Acryl 40%



KS – Kat II. BA 75% PES 25%



KQ – Kat II. BA 15% PES 45% Acryl 40%



KU – Kat II. BA 15% PES 85%



LA – kat.II 30%PES,42%ACRYL,28%POP



LB -kat II. 30%PES,42%ACRYL,28%POP



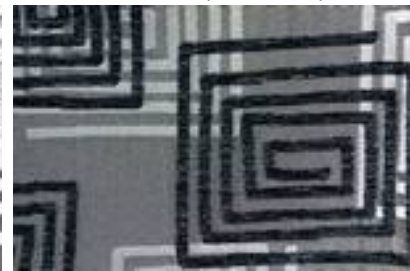
LC - kat. 30%PES,42%ACRYL,28%POP



LD-IIkat. 30%PES,42%ACRYL,28%POP



LE-IIkat. 30%PES,42%ACRYL,28%POP



LF - kat. 30%PES,42%ACRYL,28%POP



LI - kat. 40%PES,35%PAN,15%POP



LJ - kat. 40%PES,35%PAN,15%POP



LL - kat. 33%PES,45%PAN,22%POP



LM - kat. 33%PES,45%PAN,22%POP



LN - kat. 33%PES,45%PAN,22%POP



LO - kat. 33%PES,45%PAN,22%POP



LP - kat. 33%PES,45%PAN,22%POP



LR - kat. 33%PES,45%PAN,22%POP



LS - kat. 33%PES,45%PAN,22%POP



LT - kat. 40%PES,35%PAN,15%POP



LU - kat. 40%PES,35%PAN,15%POP



LV - II.kat. 40%PES,35%PAN,15%POP



RA - kat. 38%PES,38%PAN,24% POP



RB - kat. 38%PES,38%PAN,24% POP



RC - kat. 38%PES,38%PAN,24% POP



RD - kat. 38%PES,38%PAN,24% POP



RE - kat. 38%PES,38%PAN,24% POP



RG - kat. 38%PES,38%PAN,24% POP



SA - kat. 32%PES,47%PAN,21%POP



SB - kat. 32%PES,47%PAN,21%POP



SC - kat. 32%PES,47%PAN,21%POP



SD - kat. 32%PES,47%PAN,21%POP



SG - kat. 58%PES,42%PAN



SH - kat. 58%PES,42%PAN



SI - kat. 58%PES,42%PAN



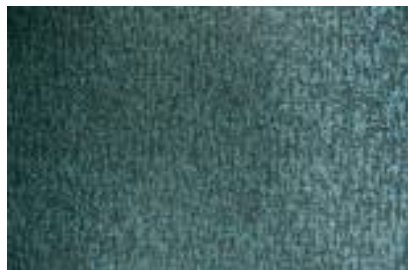
SJ - kat. 58%PES,42%PAN



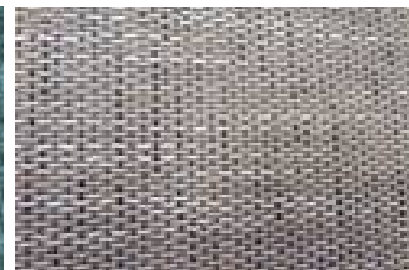
KC – Kat II. BA 30% PES 70%



KE – Kat II. BA 30% PES 70%



KG – Kat II. BA 30% PES 70%



KH – Kat II. BA 8% PES 84% Acryl



KT – Kat II. BA 75% PES 25%



KW – Kat II. PES 30% Acryl 70%



KX – Kat II. PES 30% Acryl 70%



KY – Kat II. PES 30% Acryl 70%



KZ – Kat II. PES 30% Acryl 70%





**NA - Kat II. PES 30% Acryl 70%**



**NB – Kat II. PES 30% Acryl 70%**



**NC – Kat II. PES 30% Acryl 70%**



**ND - kat.46%PES,40%PAN,14%VS**



**NE - kat. 46%PES,40 PAN,14 % VS**



**NF kat.II 46%PES,40%PAN,14%VS**



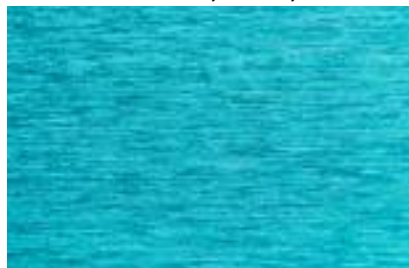
**NG - kat. 46%PES,40%PAN,14%VS**



**NH - kat. 46%PES,40%PAN,14%VS**



**NI - kat. 46%PES,40%PAN,14%VS**



**NJ - kat. 46%PES,40%PAN,14%VS**



**NK - kat. 46%PES,40%PAN,14%VS**



**NL - kat. 46%PES,40%PAN,14%VS**



**RH - kat. 38%PES,38%PAN,24%POP**



**RI - kat. 38%PES,38%PAN,24%POP**



**RJ - kat. 38%PES,38%PAN,24%POP**



**RK - kat. 38%PES,38%PAN,24%POP**



**RL - kat. 38%PES,38%PAN,24%POP**



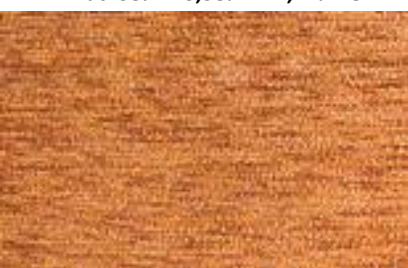
**RM - kat. 38%PES,38%PAN,24%POP**



**RN - kat. 38%PES,38%PAN,24%POP**



**SO - kat. 68%PES,31%PAN,1% METAL**



**SP - kat.68%PES,31%PAN,1% METAL**



**SQ - kat.68%PES,31%PAN,1%METAL**



**CK – Kat II. Polyester 100%**

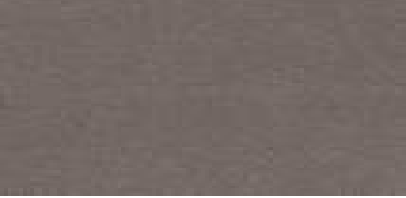


**CL – Kat II. Polyester 100%**



**CM – Kat II. Polyester 100%**





**CN – Kat II. Polyester 100%**