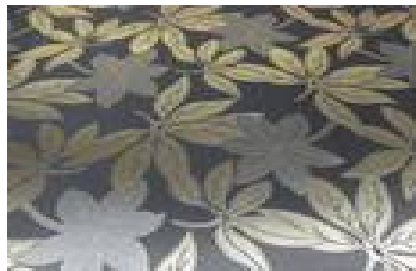




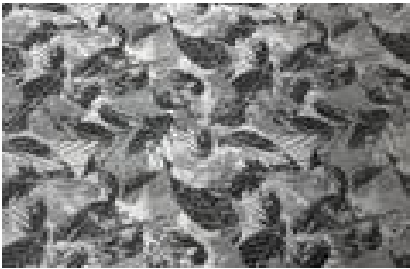
BO - Kat. II. Polyester 50% / PAN 50%



KA - Kat II. PES 100%



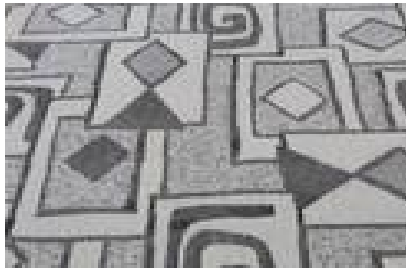
KB - Kat II. BA 30% PES 70%



KD - Kat II. BA 30% PES 70%



KF - Kat II. BA 30% PES 70%



KJ - Kat II. BA 15% PES 45% Acryl 40%



KK Kat II. BA 15% PES 45% Acryl 40%



KL - Kat II. BA 15% PES 45% ACRYL 40%



KM - Kat II. BA 15% PES 45% Acryl 40%



KN - Kat II. PES 40% Acryl 60%



KO - Kat II. PES 40% Acryl 60%



KP - Kat II. PES 40% Acryl 60%



KR - Kat II. BA 15% PES 45% Acryl 40%



KS - Kat II. BA 75% PES 25%



KQ - Kat II. BA 15% PES 45% Acryl 40%



KU - Kat II. BA 15% PES 85%



LA - kat.II 30%PES,42%ACRYL,28%POP



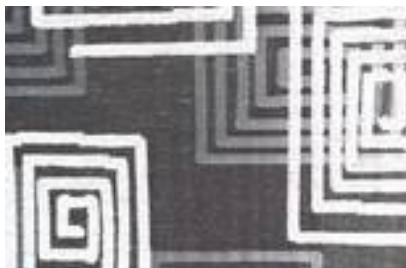
LB -kat II. 30%PES,42%ACRYL,28%POP



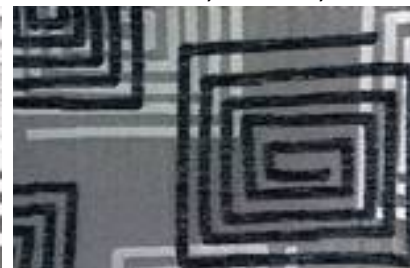
LC - kat. 30%PES,42%ACRYL,28%POP



LD-IIkat. 30%PES,42%ACRYL,28%POP



LE-IIkat. 30%PES,42%ACRYL,28%POP



LF - kat. 30%PES,42%ACRYL,28%POP



LI - kat. 40%PES,35%PAN,15%POP



LJ - kat. 40%PES,35%PAN,15%POP



LK - kat. 40%PES,35%PAN,15%POP



LL - kat. 33%PES,45%PAN,22%POP



LM - kat. 33%PES,45%PAN,22%POP



LN - kat. 33%PES,45%PAN,22%POP



LO - kat. 33%PES,45%PAN,22%POP



LP - kat. 33%PES,45%PAN,22%POP



LR - kat. 33%PES,45%PAN,22%POP



LS - kat. 33%PES,45%PAN,22%POP



LT - kat. 40%PES,35%PAN,15%POP



LU - kat. 40%PES,35%PAN,15%POP



LV - II.kat. 40%PES,35%PAN,15%POP



RA - kat. 38%PES,38%PAN,24% POP



RB - kat. 38%PES,38%PAN,24% POP



RC - kat. 38%PES,38%PAN,24% POP



RD - kat. 38%PES,38%PAN,24% POP



RE - kat. 38%PES,38%PAN,24% POP



RG - kat. 38%PES,38%PAN,24% POP



SA - kat. 32%PES,47%PAN,21%POP



SB - kat. 32%PES,47%PAN,21%POP



SC - kat. 32%PES,47%PAN,21%POP



SD - kat. 32%PES,47%PAN,21%POP



SE - kat. 58%PES,42%PAN



SF - kat. 58%PES,42%PAN



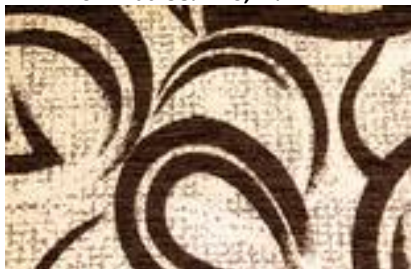
SG - kat. 58%PES,42%PAN



SH - kat. 58%PES,42%PAN



SI - kat. 58%PES,42%PAN



SJ - kat. 58%PES,42%PAN