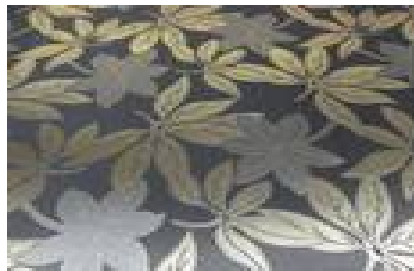




BO - Kat. II. Polyester 50% / PAN 50%



KA - Kat II. PES 100%



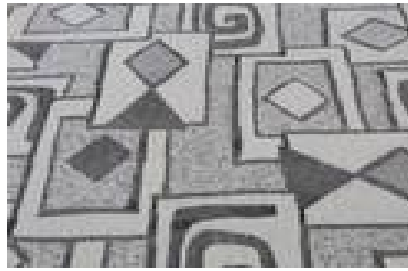
KB - Kat II. BA 30% PES 70%



KD - Kat II. BA 30% PES 70%



KF - Kat II. BA 30% PES 70%



KJ - Kat II. BA 15% PES 45% Acryl 40%



KK Kat II. BA 15% PES 45% Acryl 40%



KL - Kat II. BA 15% PES 45% ACRYL 40%



KM - Kat II. BA 15% PES 45% Acryl 40%



KN - Kat II. PES 40% Acryl 60%



KO - Kat II. PES 40% Acryl 60%



KP - Kat II. PES 40% Acryl 60%



KR - Kat II. BA 15% PES 45% Acryl 40%



KS - Kat II. BA 75% PES 25%



KQ - Kat II. BA 15% PES 45% Acryl 40%



KU - Kat II. BA 15% PES 85%



LA - kat.II 30%PES,42%ACRYL,28%POP



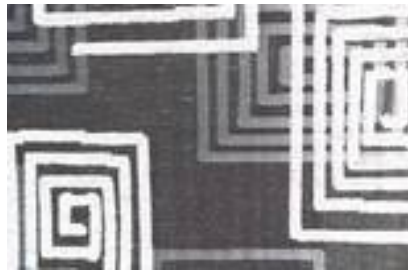
LB -kat II. 30%PES,42%ACRYL,28%POP



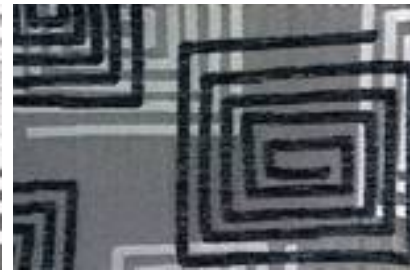
LC - kat. 30%PES,42%ACRYL,28%POP



LD-IIkat. 30%PES,42%ACRYL,28%POP



LE-IIkat. 30%PES,42%ACRYL,28%POP



LF - kat. 30%PES,42%ACRYL,28%POP



LH - kat. 40%PES,35%PAN,15%POP



LI - kat. 40%PES,35%PAN,15%POP



LJ - kat. 40%PES,35%PAN,15%POP



LK - kat. 40%PES,35%PAN,15%POP



LL - kat. 33%PES,45%PAN,22%POP



LM - kat. 33%PES,45%PAN,22%POP



LN - kat. 33%PES,45%PAN,22%POP



LO - kat. 33%PES,45%PAN,22%POP



LP - kat. 33%PES,45%PAN,22%POP



LQ - kat. 33%PES,45%PAN,22%POP



LR - kat. 33%PES,45%PAN,22%POP



LS - kat. 33%PES,45%PAN,22%POP



LT - kat. 40%PES,35%PAN,15%POP



LU - kat. 40%PES,35%PAN,15%POP



LV - II.kat. 40%PES,35%PAN,15%POP



LX - kat. 40%PES,35%PAN,15%POP



LY - kat. 40%PES,35%PAN,15%POP



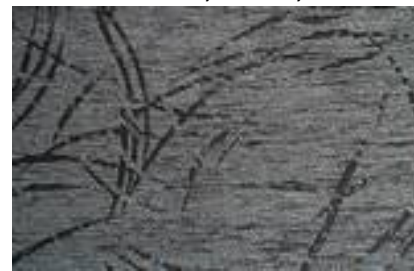
RA - kat. 38%PES,38%PAN,24% POP



RB - kat. 38%PES,38%PAN,24% POP



RC - kat. 38%PES,38%PAN,24% POP



RD - kat. 38%PES,38%PAN,24% POP



RE - kat. 38%PES,38%PAN,24% POP



RF - kat. 38%PES,38%PAN,24% POP



RG - kat. 38%PES,38%PAN,24% POP



SA - kat. 32%PES,47%PAN,21%POP



SB - kat. 32%PES,47%PAN,21%POP



SC - kat. 32%PES,47%PAN,21%POP



SD - kat. 32%PES,47%PAN,21%POP



SE - kat. 58%PES,42%PAN



SF - kat. 58%PES,42%PAN



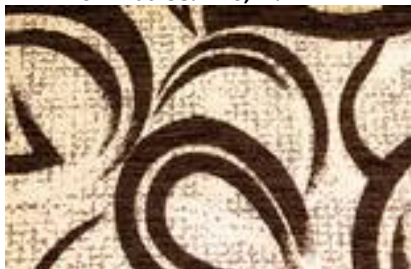
SG - kat. 58%PES,42%PAN



SH - kat. 58%PES,42%PAN



SI - kat. 58%PES,42%PAN



SJ - kat. 58%PES,42%PAN



SK - kat. 58%PES,42%PAN



SL - kat. 68%PES,31%PAN,1% METAL



SM - kat. 68%PES,31%PAN,1% METAL



SN - kat. 68%PES,31%PAN,1% METAL



SR - kat. 60%PES,40%PAN



LG -II.kat 30%PES,42 %ACRYL,28 %POP



KC – Kat II. BA 30% PES 70%



KE – Kat II. BA 30% PES 70%



KG – Kat II. BA 30% PES 70%



KH – Kat II. BA 8% PES 84% Acryl



KI – Kat II. PES 100%



KT – Kat II. BA 75% PES 25%



KW – Kat II. PES 30% Acryl 70%



KX – Kat II. PES 30% Acryl 70%



KY – Kat II. PES 30% Acryl 70%



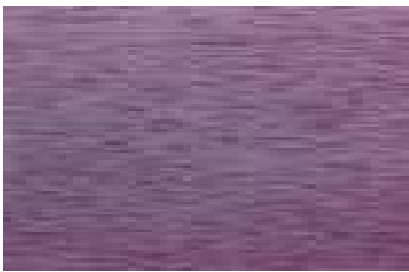
KZ – Kat II. PES 30% Acryl 70%



NA - Kat II. PES 30% Acryl 70%



NB – Kat II. PES 30% Acryl 70%



NC – Kat II. PES 30% Acryl 70%



ND - kat.46%PES,40%PAN,14%VS



NE - kat. 46%PES,40 PAN,14 % VS



NF - kat. 46%PES,40%PAN,14%VS



NG - kat. 46%PES,40%PAN,14%VS



NH - kat. 46%PES,40%PAN,14%VS



NI - kat. 46%PES,40%PAN,14%VS



NJ - kat. 46%PES,40%PAN,14%VS



NK - kat. 46%PES,40%PAN,14%VS



NL - kat. 46%PES,40%PAN,14%VS



RH - kat. 38%PES,38%PAN,24%POP



RI - kat. 38%PES,38%PAN,24%POP



RJ - kat. 38%PES,38%PAN,24%POP



RK - kat. 38%PES,38%PAN,24%POP



RL - kat. 38%PES,38%PAN,24%POP



RM - kat. 38%PES,38%PAN,24%POP



RN - kat. 38%PES,38%PAN,24%POP



SO - kat. 68%PES,31%PAN,1% METAL



SP - kat.68%PES,31%PAN,1% METAL



SQ - kat.68%PES,31%PAN,1%METAL



BP - Kat. II. Polyester 50% / PAN 50%



EP - Kat.II. Viskoza 18% / Pol.82%